



Offsight

Enabling The
Future of Construction

www.offsite.com



Construction is Moving Offsite

Companies that fail to invest in building their offsite business are at risk of getting left behind.

\$256B

PROFIT POOL
MOVING OFFSITE

77%

OF CONSTRUCTION
EXECS BELIEVE OFFSITE
SHIFT UNDERWAY

45%

BELIEVE SHIFT
WILL HAPPEN OVER
NEXT 5 YRS

71%

OF THE VALUE CHAIN
WILL BE DISRUPTED

What's Driving The Move?



Speed

Manufacturing production and repeatability of design allow for fast delivery and rapid time to value for owners.



Cost

Factory operators working multiple shifts in designated assembly areas, boost overall productivity and save on rapidly rising job-site labor costs.



Quality

Controlled assembly in a factory environment allows for quality excellence through a regulated process that reduces costly job site rework and material waste.



Climate

Construction in the factory minimizes job-site impact on the local environment and greatly reduces fossil fuel emissions due to job-site transportation.

The Key to Harnessing The Full ROI of Building Offsite

Technology enables specialty contractors and builders to move work offsite and realize the full return on their investment.

- Moving an inefficient process into a factory setting won't drive value add
- The key is to pair production and process management with technology

**Technology + Manufacturing Productivity
= Speed, Cost Savings, Quality Excellence and
Reduced Material Waste**



Enabling Offsite Construction Through Process and Production Management

Offsight's manufacturing project management software provides the tools necessary to launch, operate and scale your prefab factory operations and projects.



**Production
& Quality Tracking**



**Factory Reporting
& Auditing**



**Labor Tracking &
Timesheets**



**Materials & Inventory
Management**



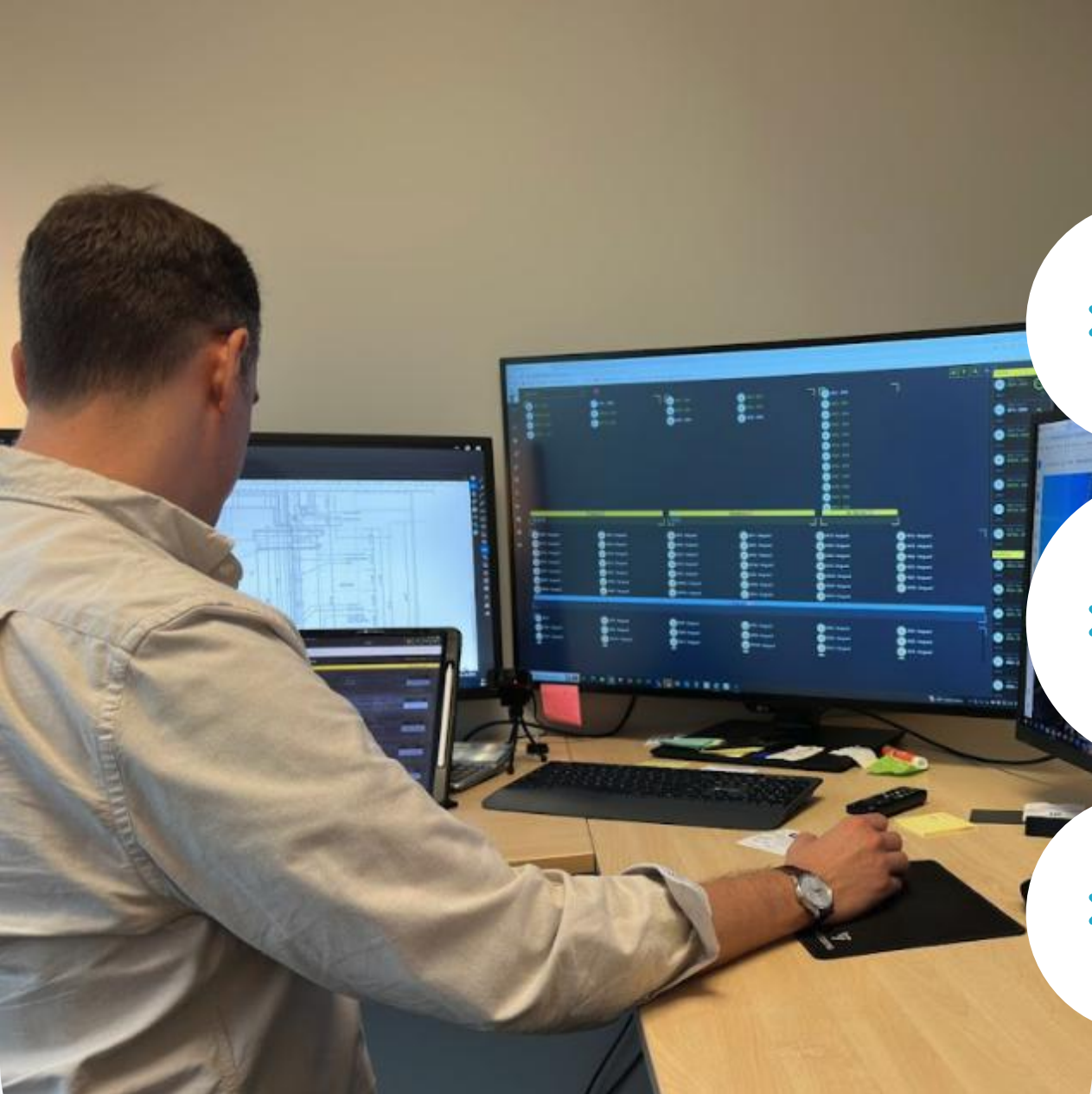
Managing Offsite Factory Delivery & Quality

- Track progress against your production schedule
- Access real time shop drawings for assembly on the prefab floor
- Track, identify, resolve quality issues to limit job site rework

Managing Project Visibility Through Collaboration

- Share daily project status with onsite contractors for job-site coordination
- Provide owners/financiers with progress updates for billing and offsite risk mitigation
- Provide building inspectors with full conformance reports and save time on audits/code review





Cutting Down Material Waste

- Track real time material consumption from the floor for accurate costing
- Manage inventory, create bill of materials and generate purchase orders to streamline entire materials workflow
- Manage supplier quality by tracking material waste for materials received

Controlling Factory Labor Costs To Drive Project Profitability

- Track real-time labor costs to specific products to manage target vs actual production KPIs
- Better cost forecasting across projects based on live production data
- Calculate labor effectiveness by tracking team productivity at stations or processes





Specialty Contractor PCI Drives ROI With Offsite



Leveraging offsite construction allows PCI to control assembly and see ROI on quality



PCI identifies, tracks and resolves prefab quality issues in Offsight



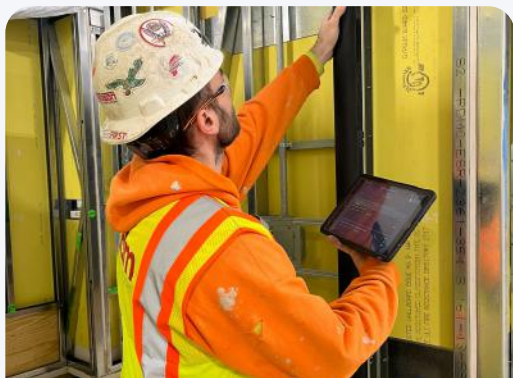
Offsight enables PCI to realize full ROI of offsite construction through quality excellence



"The platform's interface is enhancing our efficiency and transparency throughout our prefabrication process."

**Ryan Moorman,
Prefabrication Manager**

Durapods Uses Offsight For Collaborating With Onsite Contractors



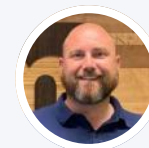
PDM manufactures 1000s of bathpods for large commercial healthcare projects



Leveraging prefabrication allows PDM to accelerate project timelines and owner return on investment



PDM leverages Offsight to provide owners and onsite contractors with real time production visibility on progress/delivery



"Offsight is a must-have tool that helps us manage our production process and meet our quality and reporting needs."

Mike Jackson,
VP of Operations

DEMO

See It In Action

